

| MODEL | MOTOR KW | RPM | BOWL DIAM. | DIMENSIONS | | | WEIGHT kg | HYDRAULIC CAPACITY m3/h |
|----------|-------------|------|---------------|------------|-------|-------|--------------|-------------------------------|
| | | | | A(mm) | B(mm) | C(mm) | | |
| CD 25 | 5,5 | 6000 | 220 | 2.000 | 690 | 1.250 | 600 | 5 |
| CD 25 E | 5,5 | 6000 | 220 | 2.000 | 690 | 1.250 | 600 | 5 |
| CD 30 S | 7.5 | 6000 | 290 | 2.140 | 740 | 1.270 | 900 | 7 |
| CD 30 SI | 11 | 6000 | 290 | 2.140 | 740 | 1.270 | 1.000 | 9 |
| CD 30 | 11/15 | 6000 | 290 | 2.460 | 740 | 1.270 | 1.200 | 10 |
| CD 30 I | 11/15 | 6000 | 290 | 2.460 | 740 | 1.270 | 1.200 | 12 |
| CD 40 S | 15/18,5 | 4200 | 380 | 3.100 | 1.115 | 1.690 | 1.800 | 15 |
| CD 40 SI | 15/18,5 | 4200 | 380 | 3.100 | 1.115 | 1.690 | 1.900 | 18 |
| CD 40 | 18,5/22 | 4000 | 380 | 3.450 | 1.115 | 1.690 | 2.000 | 20 |
| CD 40 I | 18,5/22 | 4000 | 380 | 3.450 | 1.115 | 1.690 | 2.100 | 25 |
| CD 50 S | 37/45 | 3500 | 505 | 3.850 | 1.240 | 1.735 | 2.900 | 40 |
| CD 50 SI | 37/45 | 3500 | 505 | 3.850 | 1.240 | 1.735 | 2.900 | 45 |
| CD 50 | 55 | 3500 | 505 | 4.225 | 1.240 | 1.735 | 3.800 | 53 |
| CD 50 I | 55 | 3500 | 505 | 4.225 | 1.240 | 1.735 | 3.900 | 55 |
| CD 65 S | 75 | 2800 | 650 | 4.550 | 1.550 | 1.870 | 6.000 | 65 |
| CD 65 SI | 75 | 2800 | 650 | 4.550 | 1.550 | 1.870 | 6.100 | 70 |
| CD 65 | 90 | 2800 | 650 | 5.000 | 1.550 | 1.860 | 6.750 | 75 |
| CD 65 I | 90 | 2800 | 650 | 5.000 | 1.550 | 1.860 | 6.900 | 85 |
| CD 80 | 160 | 2500 | 795 | 6.000 | 1.980 | 1.750 | 9.500 | 100 |
| CD 80 I | 160 | 2500 | 795 | 6.000 | 1.980 | 1.750 | 10.000 | 120 |

E= electric back drive S= short version I= Hydraulic version

Hydraulic back drive is the preferred standard however all units are available with electric backdrive on request



CBB
D E C A N T E R



www.drycake.com

DRYCAKE

Vanderbeken Enterprises Ltd.

1877-DRYCAKE

310 Ruisset
Drummondville, QC
J2C 0C2

Tel: 819 470 8629
www.drycake.com
info@drycake.com



CBB MOBILE PLANT

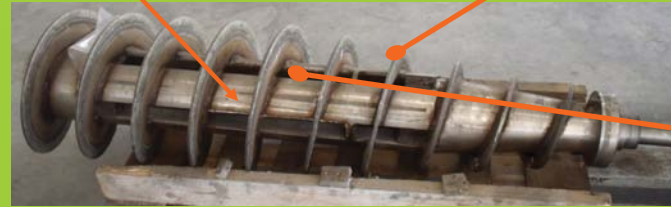


Full geared Scraper mechanism to prevent sludge built up in the solids discharge chamber

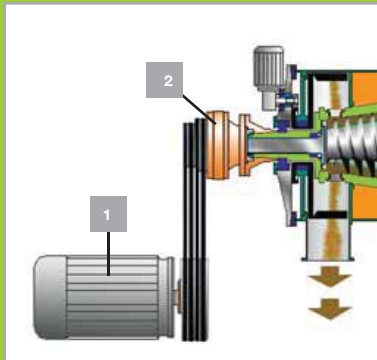


Tungsten carbide

Open scroll construction made with solid steel bars

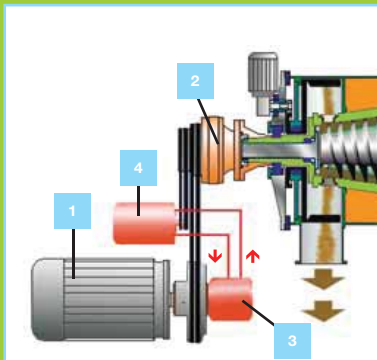


Construction details



MECHANICAL TRANSMISSION

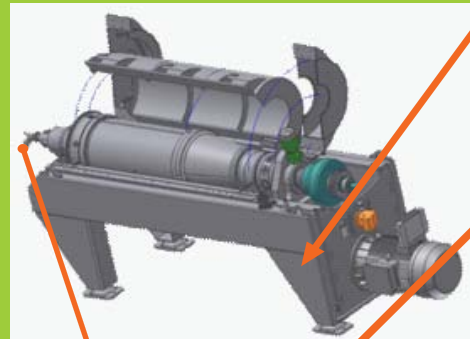
- 1 ELECTRIC MOTOR (inverter driven)
- 2 CYCLO GEAR-BOX



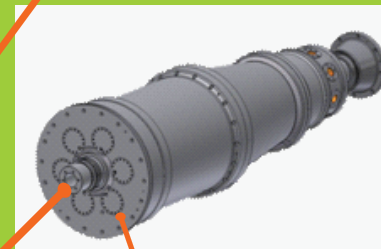
HYDRAULIC TRANSMISSION

- 1 ELECTRIC MOTOR (inverter driven)
- 2 CYCLO GEAR-BOX
- 3 HYDRAULIC PUMP
- 4 HYDRAULIC MOTOR

Individual inspection covers for the liquids and solids discharge chamber



Hydraulic oil reservoir

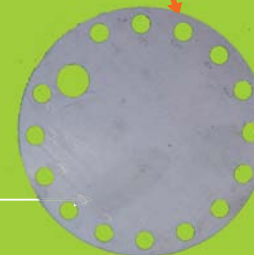


Ceramic discharge bushings



Adjustable feed pipe for fine tuning feed point even when in full operation

Liquid weirs easy to adjust (one plate for 14 positions)



Extremely easy to replace

