

MODEL	MOTOR	RPM	DRUM	DIMENSIONS			WEIGHT	HYDRAULIC CAPACITY
	HP		DIAM.	A	B	C		
CD 25	7.5	6000	8.7"	6' - 6 7/10"	2' - 3 2/10"	4' - 1 2/10"	1300	22
CD 25 E	7.5	6000	8.7"	6' - 6 7/10"	2' - 3 2/10"	4' - 1 2/10"	1300	22
CD 30 S	10	6000	11.5"	7' - 0 3/10"	2' - 5 1/10"	4' - 2"	2000	30
CD 30 SI	15	6000	11.5"	7' - 0 3/10"	2' - 5 1/10"	4' - 2"	2200	40
CD 30	15/20	6000	11.5"	7' - 0 3/10"	2' - 5 1/10"	4' - 2"	2650	44
CD 30 I	15/20	6000	11.5"	7' - 0 3/10"	2' - 5 1/10"	4' - 2"	2650	53
CD 40 S	20/25	4200	15"	10' - 2"	3' - 7 9/10"	5' - 6 5/10"	4000	66
CD 40 SI	20/25	4200	15"	10' - 2"	3' - 7 9/10"	5' - 6 5/10"	4200	80
CD 40	25/30	4000	15"	11' - 2"	3' - 7 9/10"	5' - 6 5/10"	4400	88
CD 40 I	25/30	4000	15"	11' - 2"	3' - 7 9/10"	5' - 6 5/10"	4600	110
CD 50 S	50/60	3500	20"	12' - 7.6"	4' - 0 8/10"	5' - 8 3/10"	6400	176
CD 50 SI	50/60	3500	20"	12' - 7.6"	4' - 0 8/10"	5' - 8 3/10"	6400	200
CD 50	75	3500	20"	13' - 10"	4' - 0 8/10"	5' - 8 3/10"	8400	233
CD 50 I	75	3500	20"	13' - 10"	4' - 0 8/10"	5' - 8 3/10"	8600	242
CD 65 S	100	2800	25.6"	14' - 11"	5' - 5"	6' - 1 6/10"	13250	286
CD 65 SI	100	2800	25.6"	14' - 11"	5' - 5"	6' - 1 6/10"	13500	308
CD 65	120	2800	25.6"	16' - 5"	5' - 5"	6' - 1 6/10"	14900	330
CD 65 I	120	2800	25.6"	16' - 5"	5' - 5"	6' - 1 6/10"	15200	375
CD 80	215	2500	31.3"	19' - 8"	6' - 6"	5' - 8 9/10"	21000	440
CD 80 I	215	2500	31.3"	19' - 8"	6' - 6"	5' - 8 9/10"	21000	530

E= electric back drive S= short version I= Hydraulic version

Hydraulic back drive is the preferred standard however all units are available with electric backdrive on request



CBB
D E C A N T E R



www.drycake.com

DRYCAKE

Vanderbeken Enterprises Ltd.

1877-DRYCAKE

310 Ruisselet
Drummondville, QC
J2C 0C2

Tel: 819 470 8629
www.drycake.com
info@drycake.com



CBB MOBILE PLANT

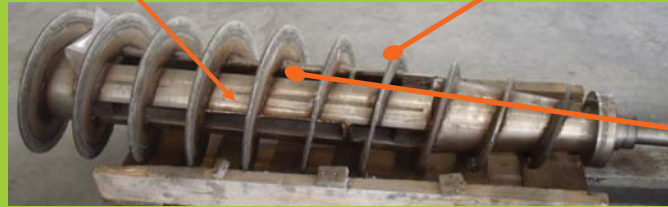


Full geared Scraper mechanism to prevent sludge built up in the solids discharge chamber

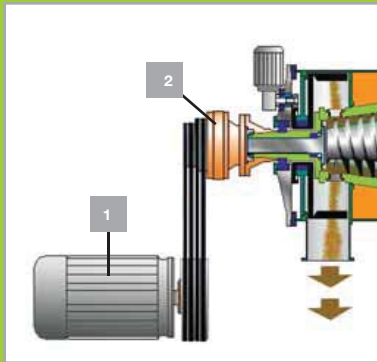


Tungsten carbide

Open scroll construction made with solid steel bars

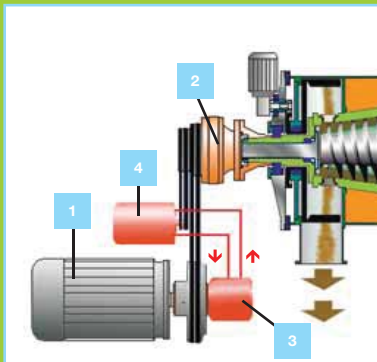


Construction details



MECHANICAL TRANSMISSION

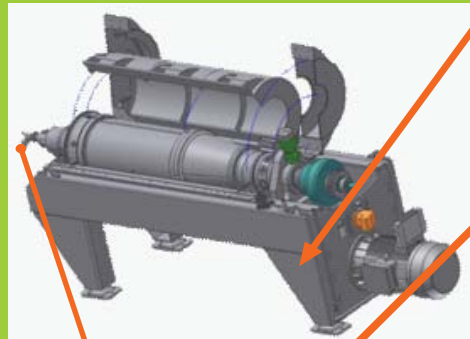
- 1 ELECTRIC MOTOR (inverter driven)
- 2 CYCLO GEAR-BOX



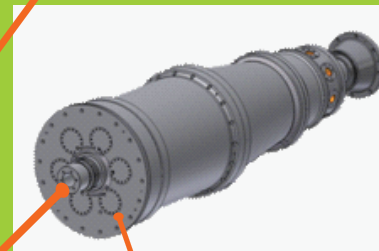
HYDRAULIC TRANSMISSION

- 1 ELECTRIC MOTOR (inverter driven)
- 2 CYCLO GEAR-BOX
- 3 HYDRAULIC PUMP
- 4 HYDRAULIC MOTOR

Individual inspection covers for the liquids and solids discharge chamber



Hydraulic oil reservoir

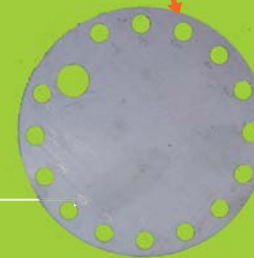


Ceramic discharge bushings



Adjustable feed pipe for fine tuning feed point even when in full operation

Liquid weirs easy to adjust (one plate for 14 positions)



Extremely easy to replace

